

# MY PERSONAL STAIRCASES

italian collection

**Scala** s. f. [lat. tardo scala -ae (nel lat. class. soltanto al plur., scalae -arum), der. di scandere «salire»]. – 1. Termine generico per indicare varî tipi di strutture fisse o mobili, a scalini o a pioli, che consentono alle persone di superare agevolmente un dislivello, salendo o scendendo a piedi.

**Staircase** Generic terminology to identify various kind of mobile or fixed structures, made of steps that allow people to easily overcome height differences from one floor to another, rising or descending them on foot.

## E20

Scale elicoidali con struttura in nylon  
Helical staircases with a nylon central spine  
pag 5

## L20

Scale a rampa con struttura in metallo  
Winder or straight stairs with metal structure  
pag 31

## S20

Scale a rampa con gradini a sbalzo  
Cantilevered stairs made of suspended steps  
pag 75

## W20

Scale a rampa con struttura in legno  
Winder or straight stairs with wood structure  
pag 97

## T20

Scale a rampa con gradini a pedata alternata  
Winder or straight stairs for limited spaces  
pag 111

## C20

Scale a chiocciola con gradini in legno, metallo e vetro  
Spiral stairs with steps made of wood, glass and metal  
pag 119

## F20

Scale a chiocciola con gradini in metallo  
Spiral stairs with steps made of metal  
pag 135

## R

Collezione ringhiere  
Railings collection  
pag 143

## F

Collezione finiture  
Finishes and treatments collection  
pag 151



+

E20

**PATENTED**

Scale a chiocciola con struttura elicoidale in nylon, gradini in legno e metallo

Helical staircases made of wood and metal steps with a nylon central spine



**E20 LQ**

Gradini in faggio tinto wenghè  
Struttura bianca  
Ringhiera R5 inox lucido  
Corrimano inox lucido  
Steps made of beech wenghè stained  
White-stained central spine  
R5 railing model with polished  
stainless steel newels and handrail





**E20 LT**  
 Gradini in faggio laccato bianco  
 Struttura bianca  
 Ringhiera R6 inox lucido  
 Corrimano inox lucido  
 Steps made of white lacquered beech  
 White-stained central spine  
 R6 railing model with polished  
 stainless steel newels and handrail



**E20 LT**

Gradini in faggio laccato bianco  
Struttura bianca  
Ringhiera R5 inox lucido  
Corrimano inox lucido  
Steps made of white lacquered beech  
White-stained central spine  
R5 railing model with polished  
stainless steel newels and handrail





**E20 LT**

Gradini in faggio tinto wenghè  
Struttura bianca  
Ringhiera R 4 inox lucido  
Corrimano inox lucido  
Steps made of wenghè-stained beech  
White structure  
R4 railing system with polished  
stainless steel newels and handrail





**E20 LT**

Gradini in faggio tinto wenghè  
Struttura bianca  
Ringhiera R 2 bianco gofrato  
Corrimano legno tinto wenghè  
Steps made of wenghè-stained  
beech embossed White central spine  
R2 railing model with varnished  
metal columns and beechwood  
handrail wenghè-stained





**E20 LQ**  
Gradini in legno laccato bianco  
Struttura bianca  
Ringhiera R7 inox lucido  
Steps made of white lacquered beech  
White-stained central spine  
R7 railing system in polished stainless steel  
Columns and beechwood handrail  
wenghè-stained



**E20 F**

Gradini in metallo presso-piegato  
verniciati bianco gofrato

Struttura bianco gofrato

Ringhiera R2 con colonne in metallo  
bianco gofrato

Corrimano plastico bianco

Press-folded metal steps white varnished

White central spine and R2 railing

White metal columns and plastic handrail





**E20 F**

Gradini in metallo presso-piegato  
verniciati bianco gofrato

Struttura bianco gofrato

Ringhiera R2 con colonne in metallo  
bianco gofrato

Corrimano plastico bianco

Press-folded metal steps white varnished

White central spine and R2 railing

White metal columns and plastic handrail

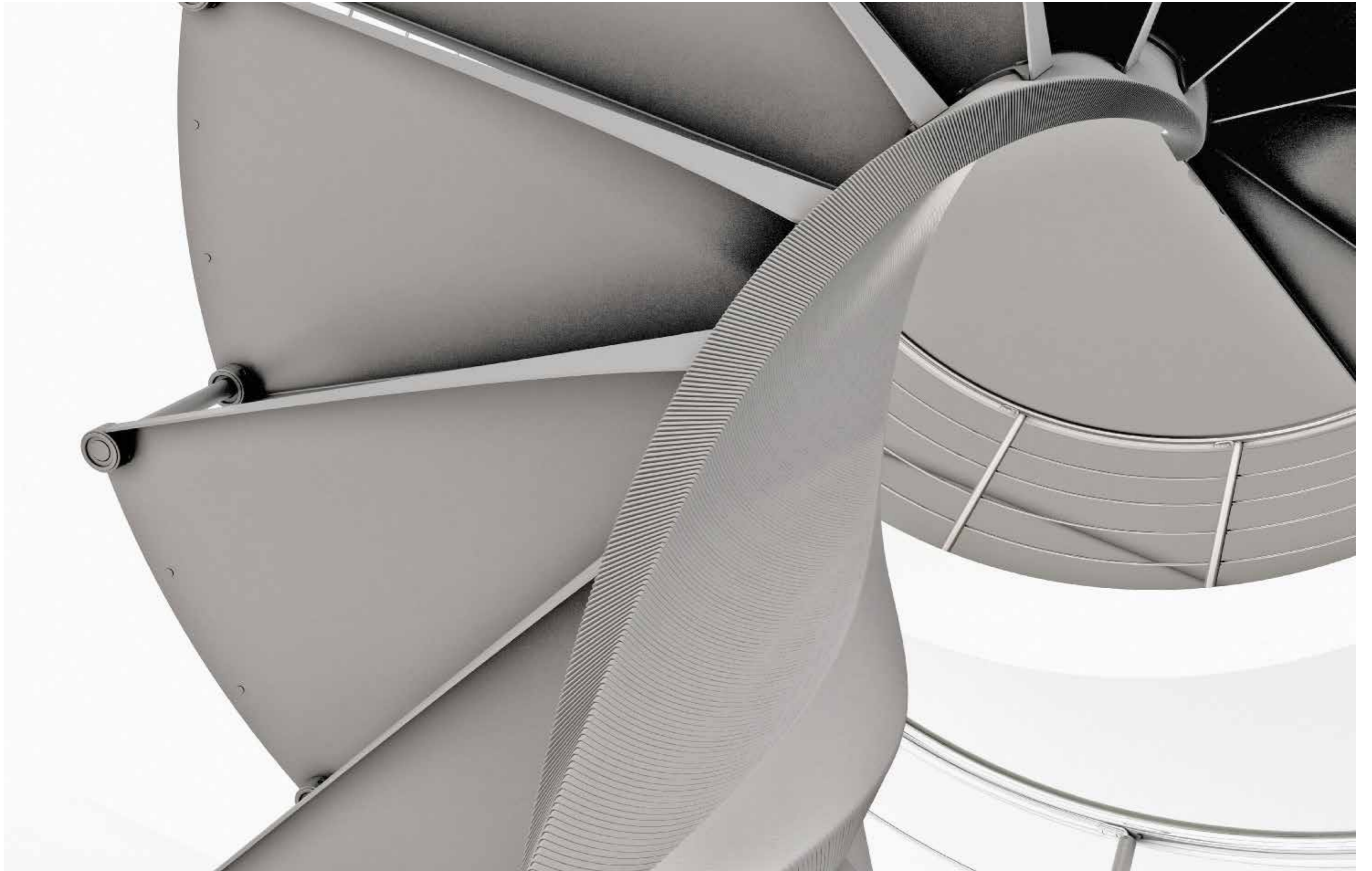




**E20 F**

Gradini in metallo presso-piegato  
verniciati nero antracite  
Struttura nera  
Ringhiera R4 con montanti  
in metallo nero antracite  
Corrimano inox lucido  
Press-folded metal steps black  
varnished  
Black central spine  
R4 railing with black newels  
Polished stainless steel handrail









**L20**

**PATENTED**

Scale a giorno con doppia o singola struttura in metallo, gradini in legno, metallo e vetro

Straight and winder staircases with single or double metal frame and steps made of wood, metal and glass



**L20-2R-GL**

Gradini in metallo verniciato  
Configurazione con doppia  
struttura sagomata a "Z"  
Ringhiera R5 con montanti  
in metallo verniciato  
Corrimano inox lucido  
Press-folded metal  
varnished steps  
Double structures configuration  
with "Z" layout  
R5 railing with varnished newels  
and polished steel handrail

**L20-2R-GL**

Gradini in lamiera verniciata  
sp.10 mm

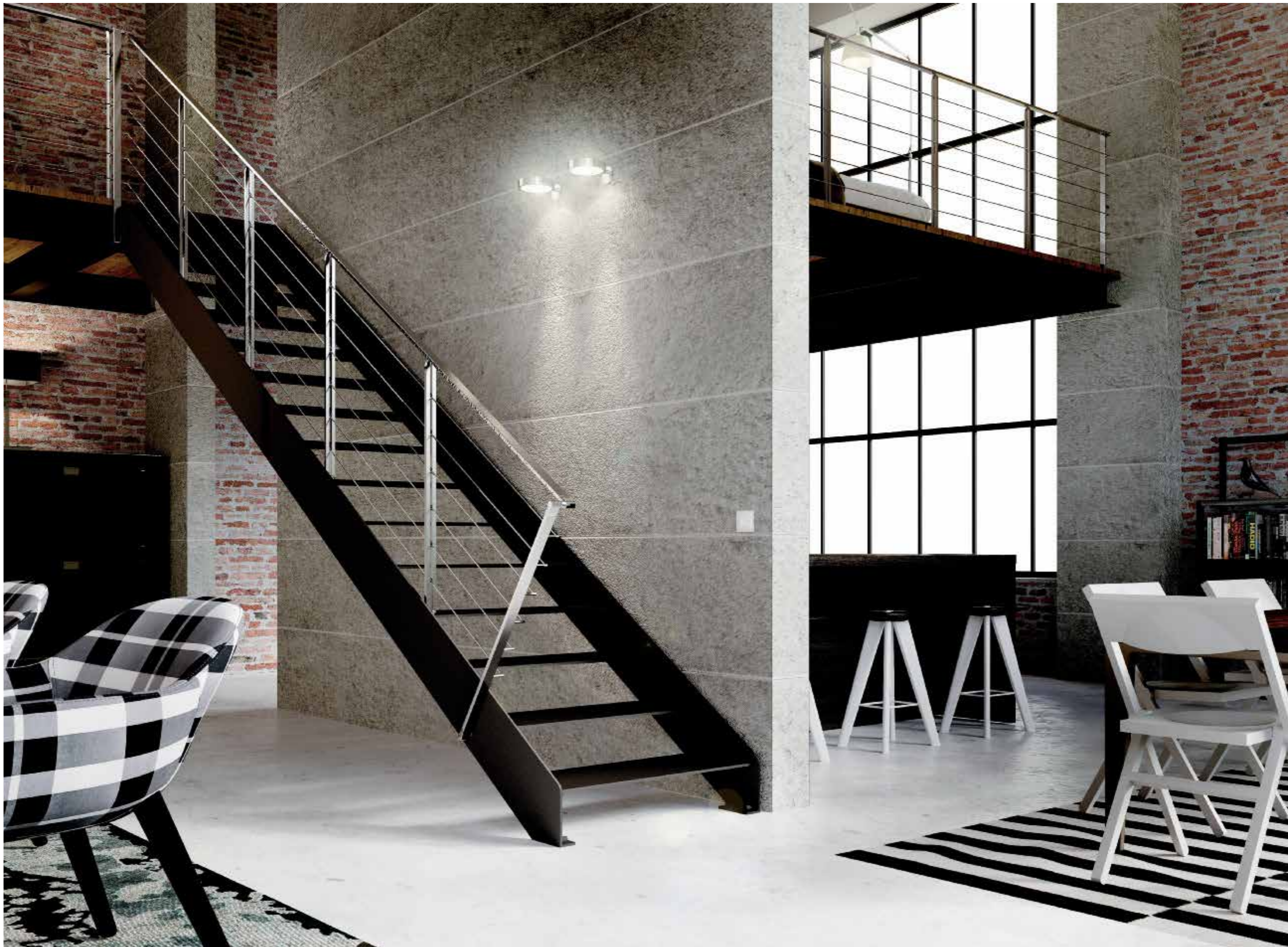
Configurazione con doppia  
struttura rettilinea ad "I"

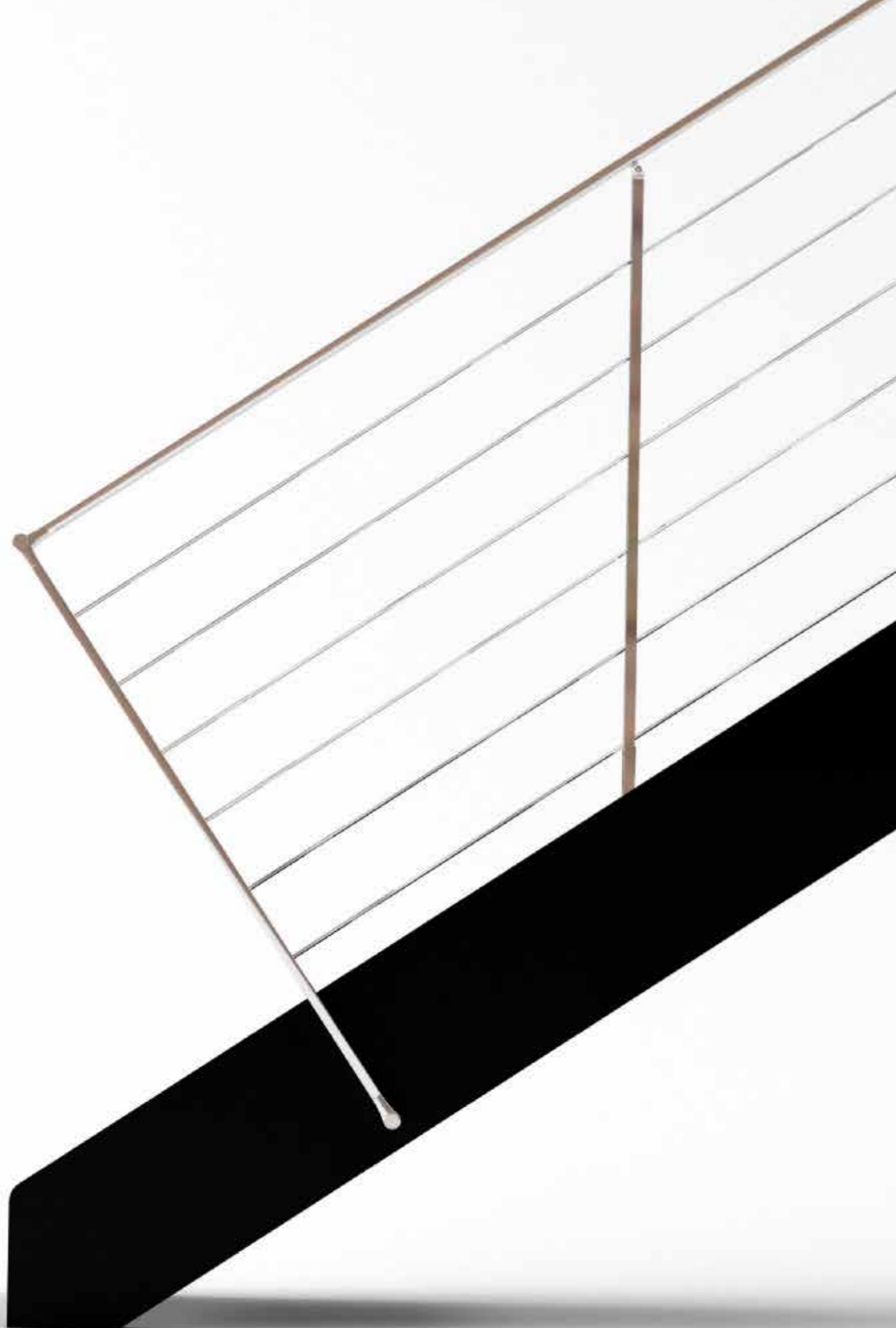
Ringhiera R5 inox  
con corrimano C7

Steps made of metal sheet  
th.10 mm

Double structure configuration  
and rectilinear layout

R5 railing with C7 handrail





**L20-2R-GL**

Gradini in lamiera verniciata sp.10 mm  
Configurazione con doppia struttura  
rettilinea a "I"  
Ringhiera R5 inox con corrimano C7  
Steps made of metal sheet th.10 mm  
Double structure configuration  
and rectilinear layout  
R5 railing with C7 handrail



**L20-2R-GLA**

Gradini ed alzate in lamiera  
colore brunito

Configurazione con doppia  
struttura sagomata a "Z"

Ringhiera R11F

Steps and risers made of  
burnished metal sheet

Double structure configuration  
with "Z" layout

R11F railing made of metal  
varnished sheets



**L20-2R-GLA**

Gradini ed alzate in lamiera colore brunito  
Configurazione con doppia struttura rettilinea a "Z"  
Ringhiera R11F  
Steps and risers made of metal sheet  
Double structure configuration and rectilinear layout  
R11F railing made of metal varnished sheets



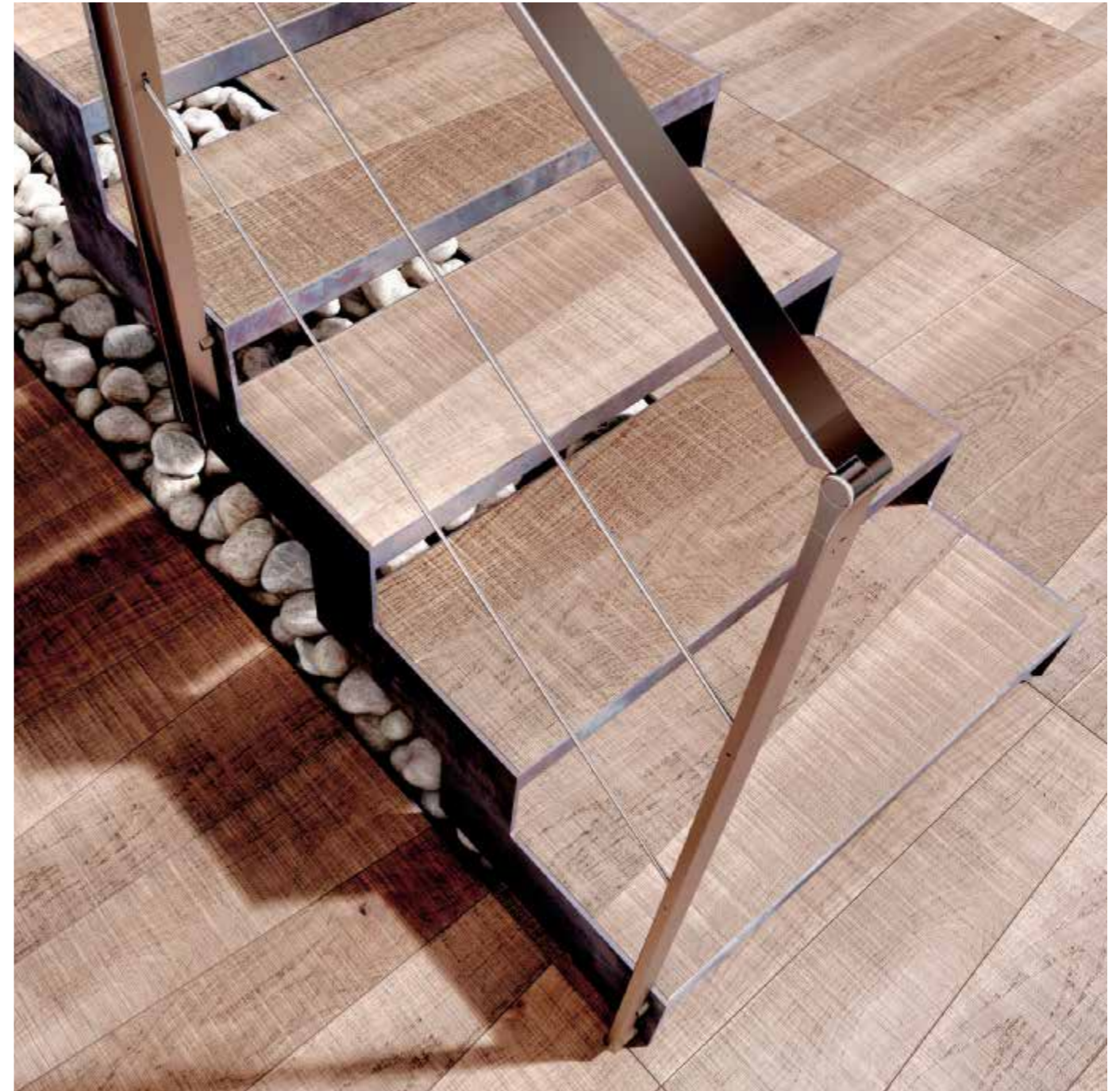
**L20-2R-GLVA**

Gradini a vaschetta con alzata chiusa  
in lamiera verniciata  
Doppia struttura rettilinea "I"  
Boxed metal steps and closed risers  
Double straight configuration with "I"  
layout th. 8 mm



**L20-2R-GLV**

Gradini a vaschetta in lamiera  
verniciata  
Doppia struttura sagomata "Z"  
Boxed metal varnished steps  
Double structure configuration  
with "Z" layout



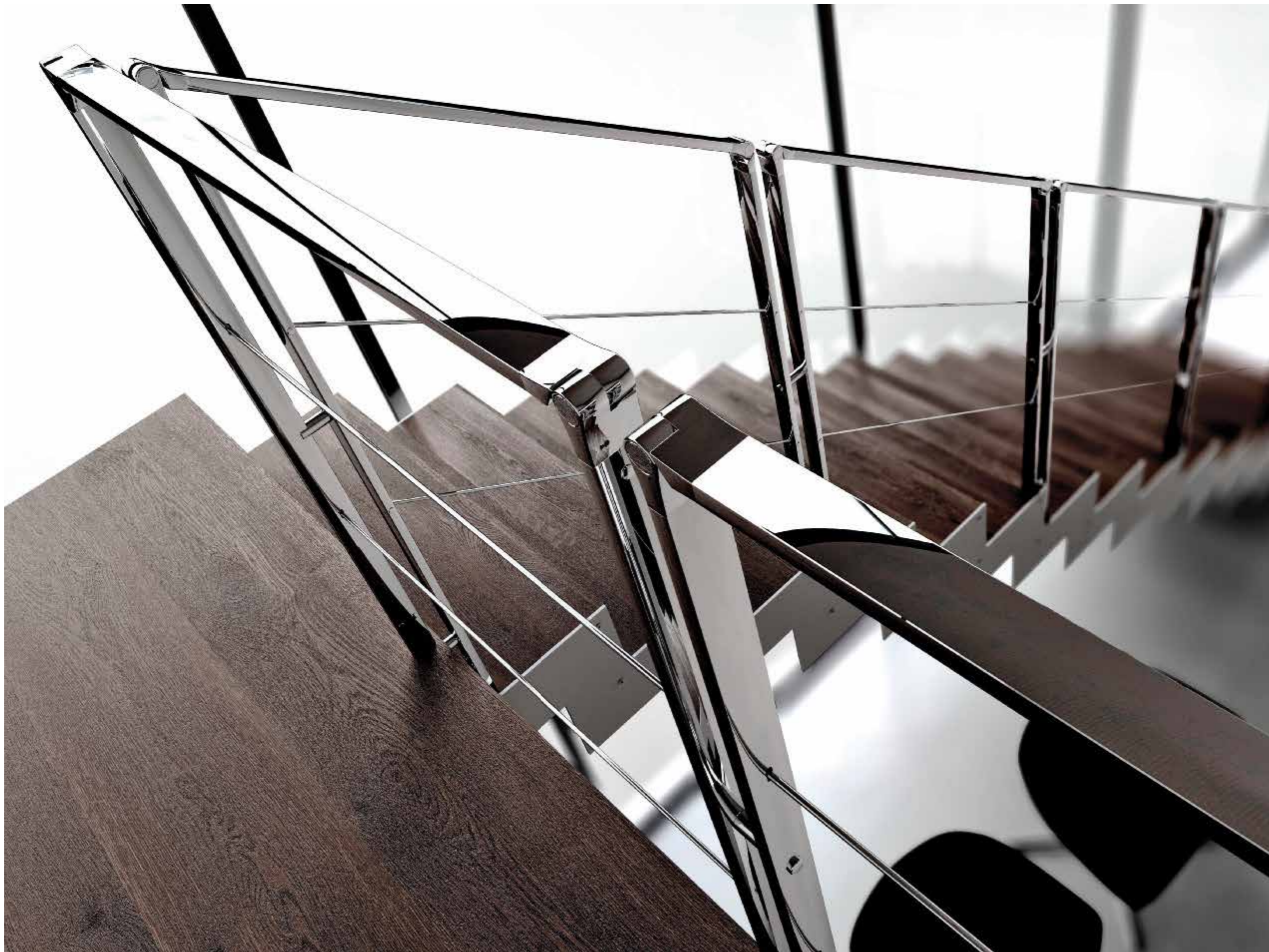






**L20-2R-GLE**

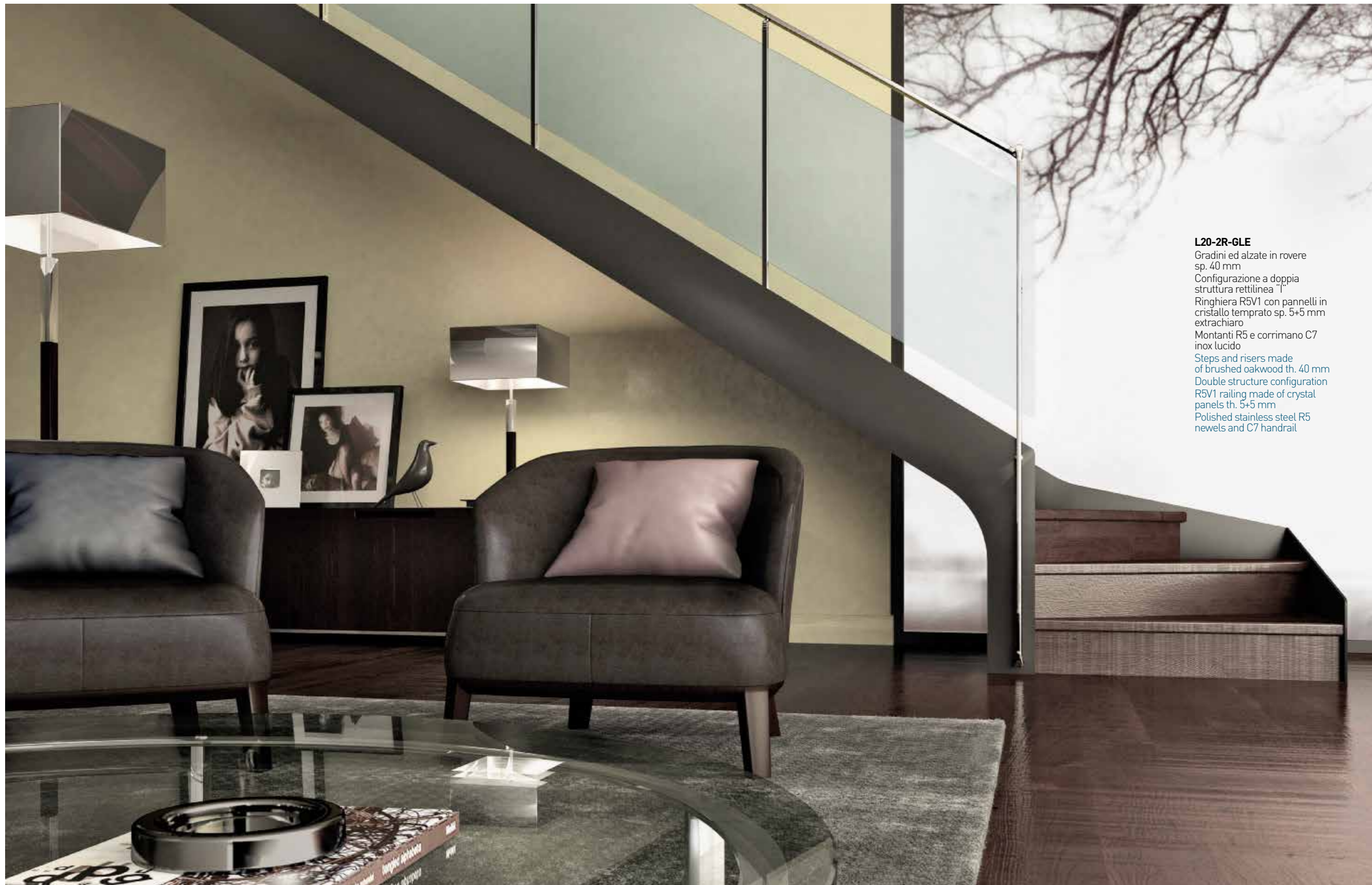
Gradini in legno rovere sp. 40 mm  
Configurazione a doppia struttura  
sagomata "Z"  
Ringhiera R7 inox lucido 2 cavetti  
Oakwood steps th. 40 mm  
Double structures configuration  
with "Z" layout  
R7 railing system polished  
stainless steel newels





**L20-2R-GVE**

Gradini in cristallo temprato  
sp. 10+10+10 mm extrachiaro  
Configurazione a doppia struttura  
sagomata a "Z"  
Ringhiera RV1 con pannelli in cristallo  
temprato 10+10 mm extrachiaro  
Tempered crystal th. 10+10+10 mm  
extrachiaro  
Double structures configuration  
RV1 railing made of crystal panels  
th. 10+10mm



**L20-2R-GLE**

Gradini ed alzate in rovere  
sp. 40 mm  
Configurazione a doppia  
struttura rettilinea "L"  
Ringhiera R5V1 con pannelli in  
cristallo temperato sp. 5+5 mm  
extrachiaro  
Montanti R5 e corrimano C7  
inox lucido  
Steps and risers made  
of brushed oakwood th. 40 mm  
Double structure configuration  
R5V1 railing made of crystal  
panels th. 5+5 mm  
Polished stainless steel R5  
newels and C7 handrail



**L20-2R-GLE**

Gradini ed alzate in rovere  
sp. 40 mm  
Configurazione a doppia  
struttura rettilinea "I"  
Ringhiera R6 inox lucido con  
corrimano e 6 filoncini inox  
lucido da  $\varnothing$  12 mm  
Steps and risers made  
of oakwood th. 40 mm  
Double structures  
configuration "I" layout  
R6 railing made of polished  
steel newels, handrail and  
 $\varnothing$  12 mm rods/infills

**L20-2R-GVE**

Gradini in vetro extrachiaro temprato  
configurazione a doppia struttura  
rettilinea inox  
Ringhiera R7-0 inox lucido  
corrimano C7  
Tempered extraclear crystal steps  
made of 10+10+10mm panels  
Double structures configuration,  
straight layout R7-0 railing system  
made of polished steel newels  
Handrail and 2 rods/infills layout





**L20-2R-GLE**

Gradini ed alzate in rovere tinto mogano sp. 40 mm  
Configurazione a doppia struttura rettilinea "I" verniciata antracite  
Ringhiera R8 corrimano legno  
Mahogany-stained oakwood steps and risers th. 40 mm  
Single structure configuration with "I" layout  
R8 railing made of squared columns and wood handrail



**L20-1R-GLE**

Gradini ed alzate in rovere  
 spazzolato laccato bianco sp. 40 mm  
 Configurazione a singola struttura  
 rettilinea "I" bianco gofrato  
 Ringhiera R8  
 Beechwood brushed steps  
 and risers th. 40 mm  
 with white lacquering  
 Single structure straight  
 configuration with "I" layout  
 R8 railing system made  
 of squared columns  
 and wood handrail





**L20-1R-GLE**

Gradini in faggio sp. 40 mm

Configurazione a singola  
struttura rettilinea "I" inox  
satinato

Ringhiera R5 e corrimano  
in inox satinato

Luci led a struttura

Beechwood steps th. 40 mm

Single structure configuration  
with "I" layout

R5 railing layout made of  
brushed stainless steel newels,  
handrail and infills/rods

Led lights on structure



**L20-1R-GLE**

Gradini ed alzate in rovere  
sp. 60 mm

Configurazione singola struttura  
sagomata "Z" bianco gofrato

Ringhiera R7 inox satinato 2  
filoncini

Oakwood steps and closed  
risers th. 60 mm

Single structure configuration  
with "Z" layout

R7 railing made of brushed  
stainless steel newels, handrail  
and infills rods







**L20-1R-GLE**

Gradini in faggio sp. 60 mm  
Configurazione a singola struttura  
rettilinea verniciata bianco gofrato  
Ringhiera RV1 in cristallo temprato  
extrachiaro 10+10 mm  
Beechwood steps th.60mm  
Single varnished structure  
configuration, straight layout  
RV1 railing made of tempered  
extra-clear crystal 10+10mm

**L20-1R-GVE**

Gradini in cristallo temprato  
sp. 10+10+10 mm extrachiaro  
Configurazione a singola struttura  
rettilinea "I" verniciata tortora  
Ringhiera R5 con montanti  
e corrimano inox lucido  
Extraclear, tempered crystal steps  
th. 10+10+10 mm  
Single structure configuration with  
dove-gray varnished metal sheets  
R5 railing with polished stainless  
steel newels and handrail





**L20-1R-GLE**  
Gradini in faggio sbiancato sp. 60 mm  
Configurazione a singola struttura  
rettilinea tinta bianco gofrato  
Ringhiera RV1 con pannelli cristallo  
extrachiaro, temprato sp.10+10 mm  
Bleached beechwood steps th. 60 mm  
Single structure configuration with  
embossed white metal sheet  
RV1 railing made of tempered  
extraclear crystal th.10+10 mm



S20

Scale a giorno con gradini a sbalzo in legno, vetro e metallo fissati a parete

Winder & straight stairs with cantilevered steps made of wood, glass and metal attached to the wall







**S20-GL**

Gradini in lamiera sp.10 mm  
bianco gofrato  
Ringhiera R10 con cavetti  
in acciaio inox  
Embossed white varnished  
metal sheet steps th.10 mm  
R10 railing made of stainless  
steel rods





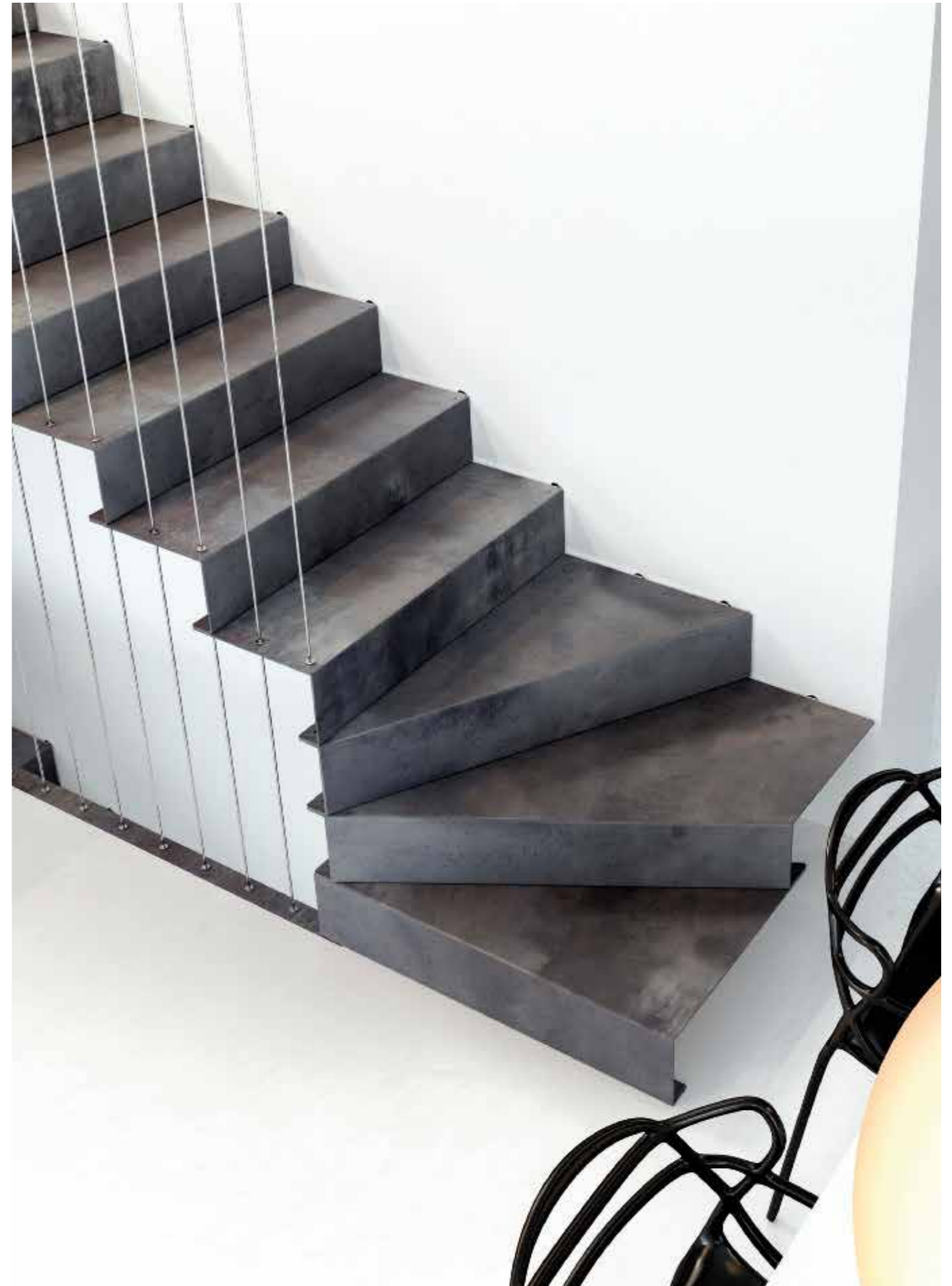
**S20-GLA**

Gradini ed alzate in lamiera  
colore brunito

Ringhiera R10 con cavetti  
in acciaio inox

Varnished metal sheet steps  
and closed risers

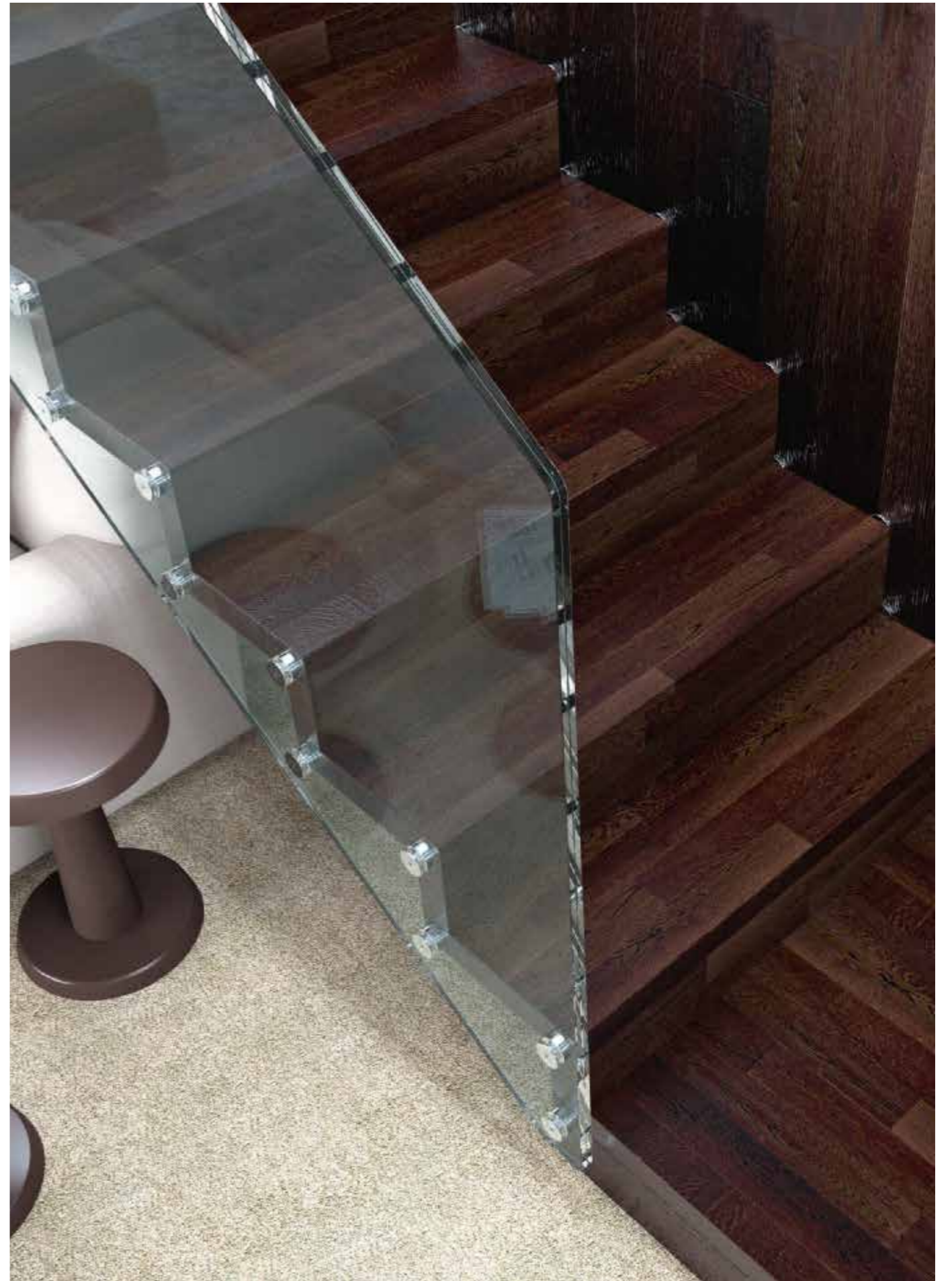
R10 railing made of stainless  
steel rods





**S20-GLE**

Gradini ed alzate in rovere  
spazzolato sp. 60 mm  
Ringhiera RV1 con pannelli in  
cristallo temprato extrachiaro  
sp.10+10 mm  
Oakwood brushed steps  
and closed risers th. 60 mm  
RV1 railing system with  
tempered, extraclear crystal  
panels th.10+10 mm







**S20-GLE**

Gradini in faggio sp. 60 mm  
Ringhiera R5 con montanti e  
corrimano inox lucido  
Beechwood steps th. 60 mm  
R5 railing system with newels  
and handrail made of polished  
stainless steel



**S20-GLE**

Gradini ed alzate in faggio laccato bianco sp. 60 mm  
Ringhiera R6 con montanti corrimano e filoncini inox lucido  
Lacquered white beechwood steps and closed risers th. 60 mm  
R6 railing system with polished stainless steel newels, handrail and rods/infills

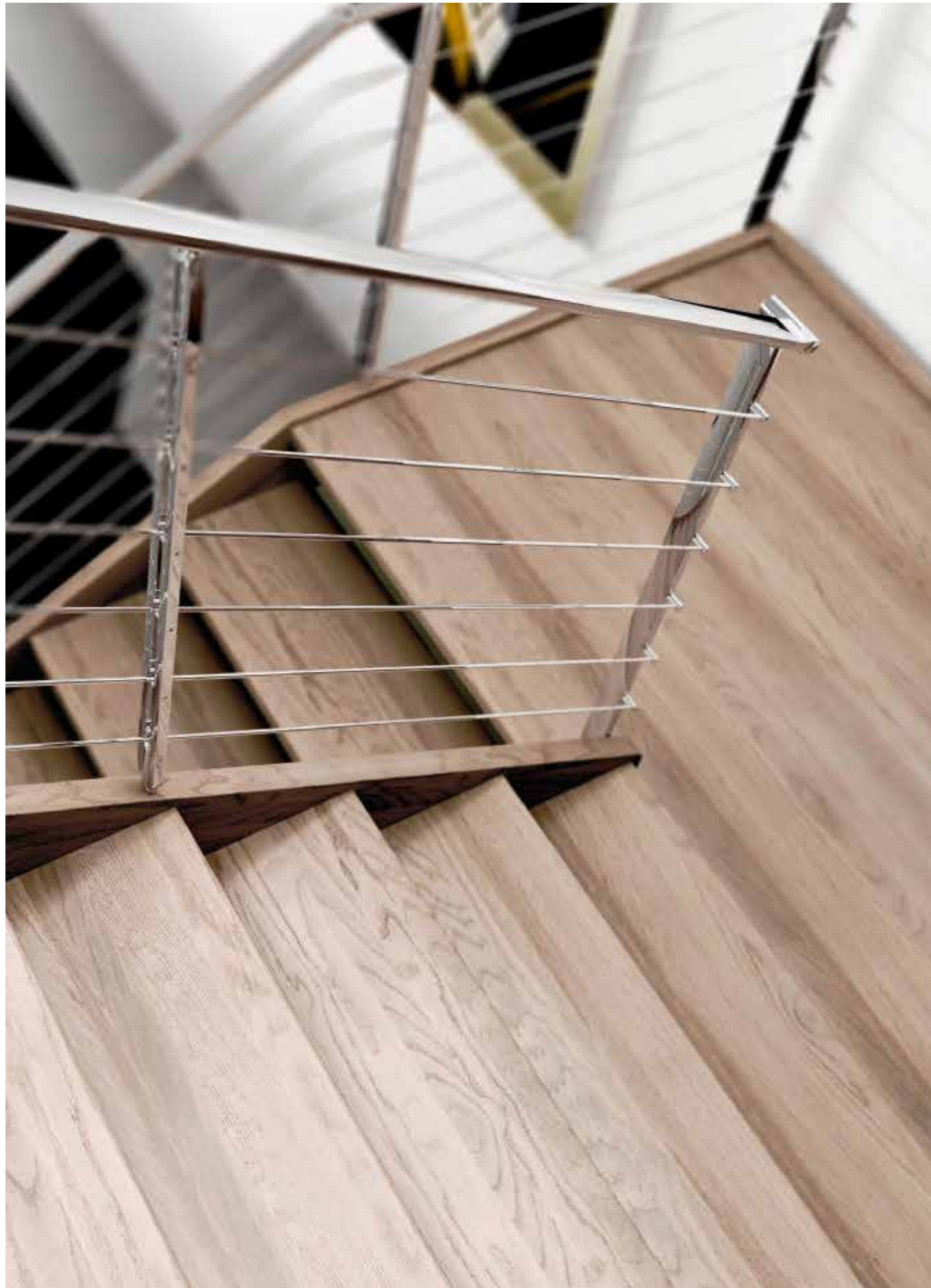






**S20-GVE**  
Gradini in cristallo temprato  
extrachiaro sp.10+10+10 mm  
Ringhiera R5 con montanti e  
corrimano inox lucido  
Tempered extrachiar crystal steps  
th.10+10+10 mm  
R5 railing system with newels  
and handrail made of polished  
stainless steel





W20

Scale a giorno con doppia o singola struttura in legno, gradini in legno  
Straight and winder staircases with single or double wooden structure and steps



**W20-2R-GLE**

Gradini in rovere sp. 40 mm  
spazzolati  
Ringhiera R5 inox lucido  
con corrimano C7  
Oakwood brushed steps  
th. 40 mm  
R5 polished stainless steel  
railing system with C7  
handrail



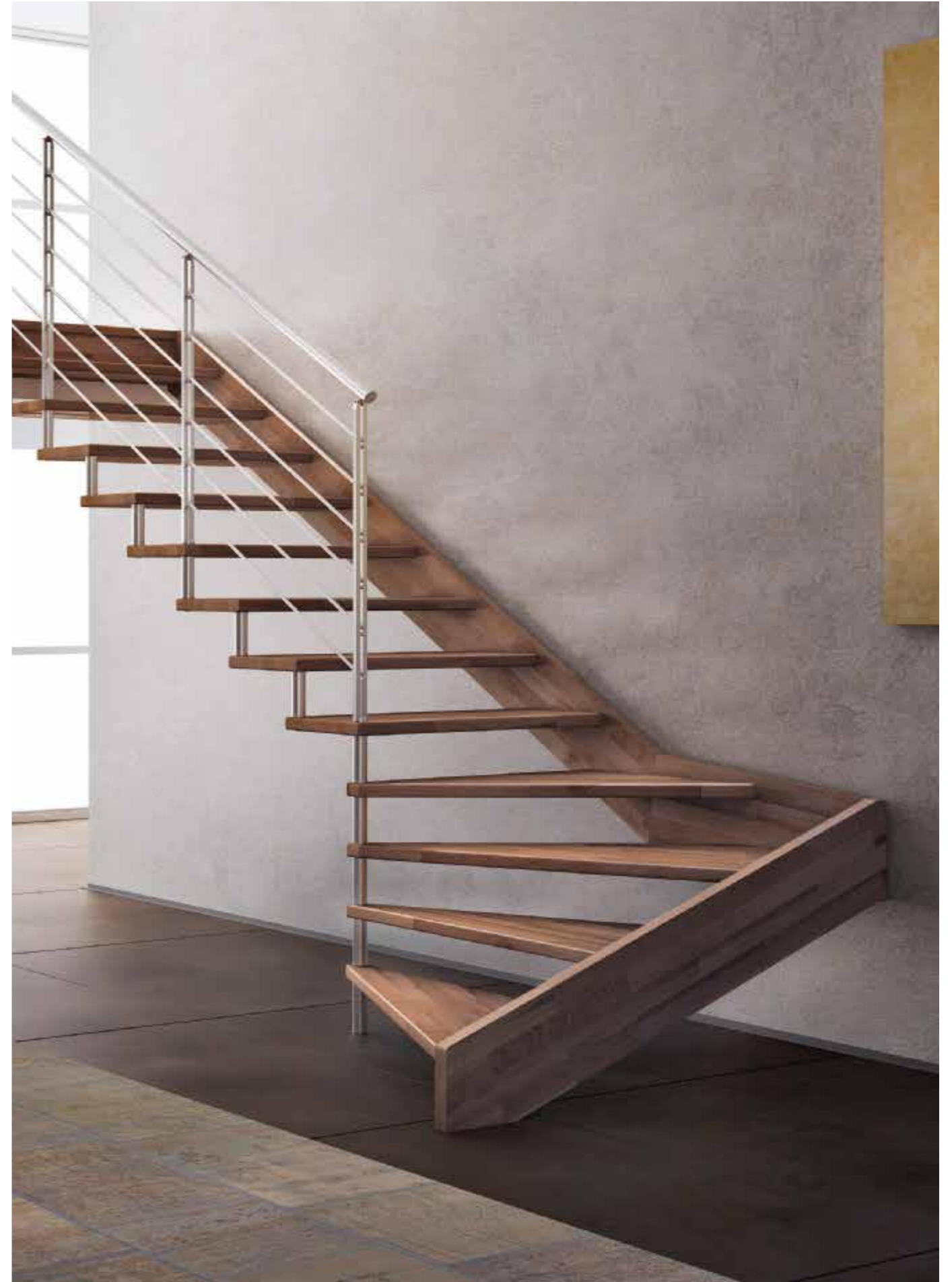
**W20-2R-GLE**

Gradini in rovere sp.40 mm  
Ringhiera R7 inox lucido  
Oakwood steps th.40 mm  
R7 polished stainless steel  
railing system



**W20-1R-GLE**

Gradini in faggio sp.40 mm  
Ringhiera R5 con montanti  
e corrimano inox lucido  
Beechwood steps th.40 mm  
R5 railing system with  
polished stainless steel  
elements





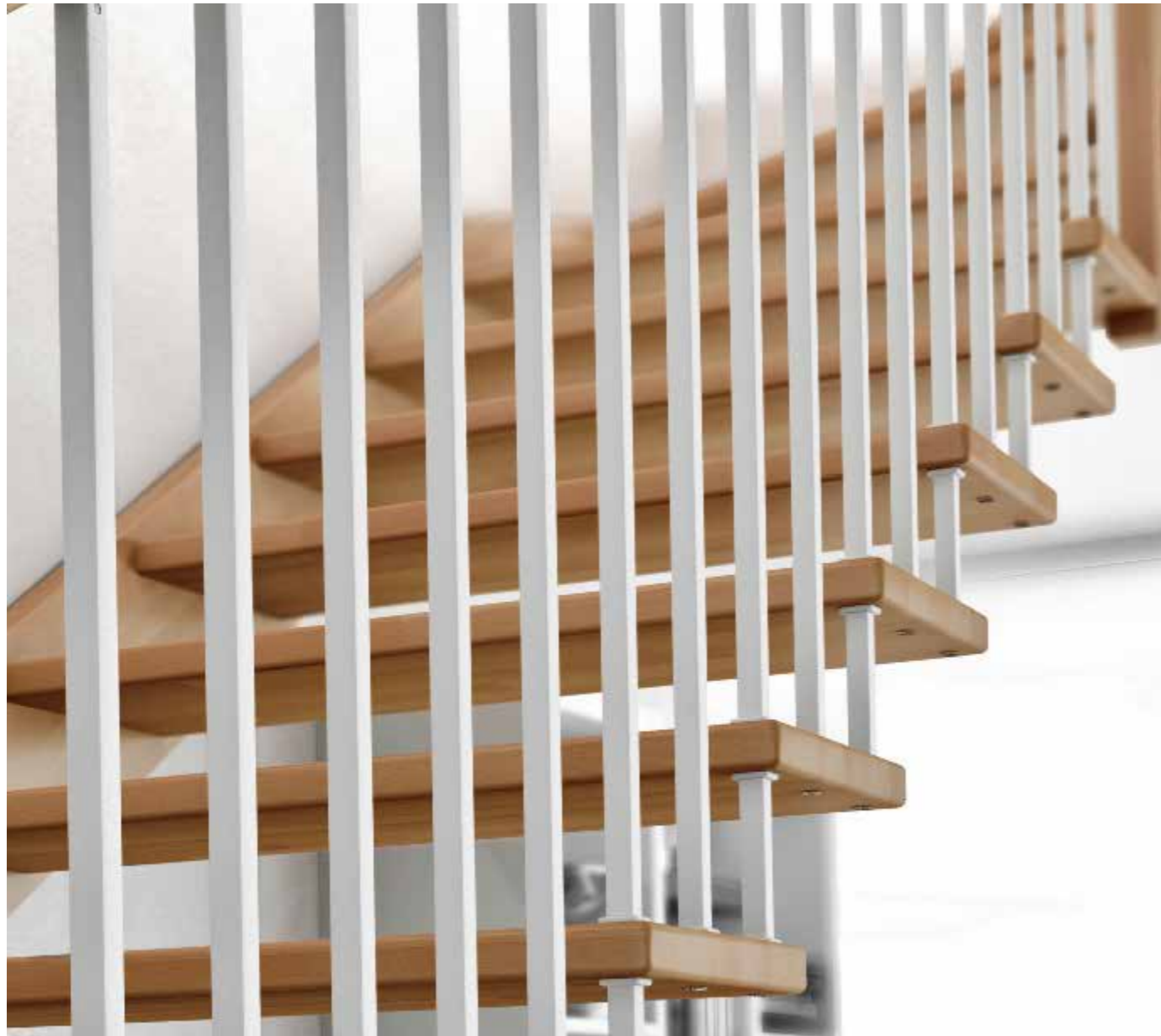
**W20-1R-GLE**

Gradini in faggio sp. 40 mm

Ringhiera R3 con colonne quadre in metallo

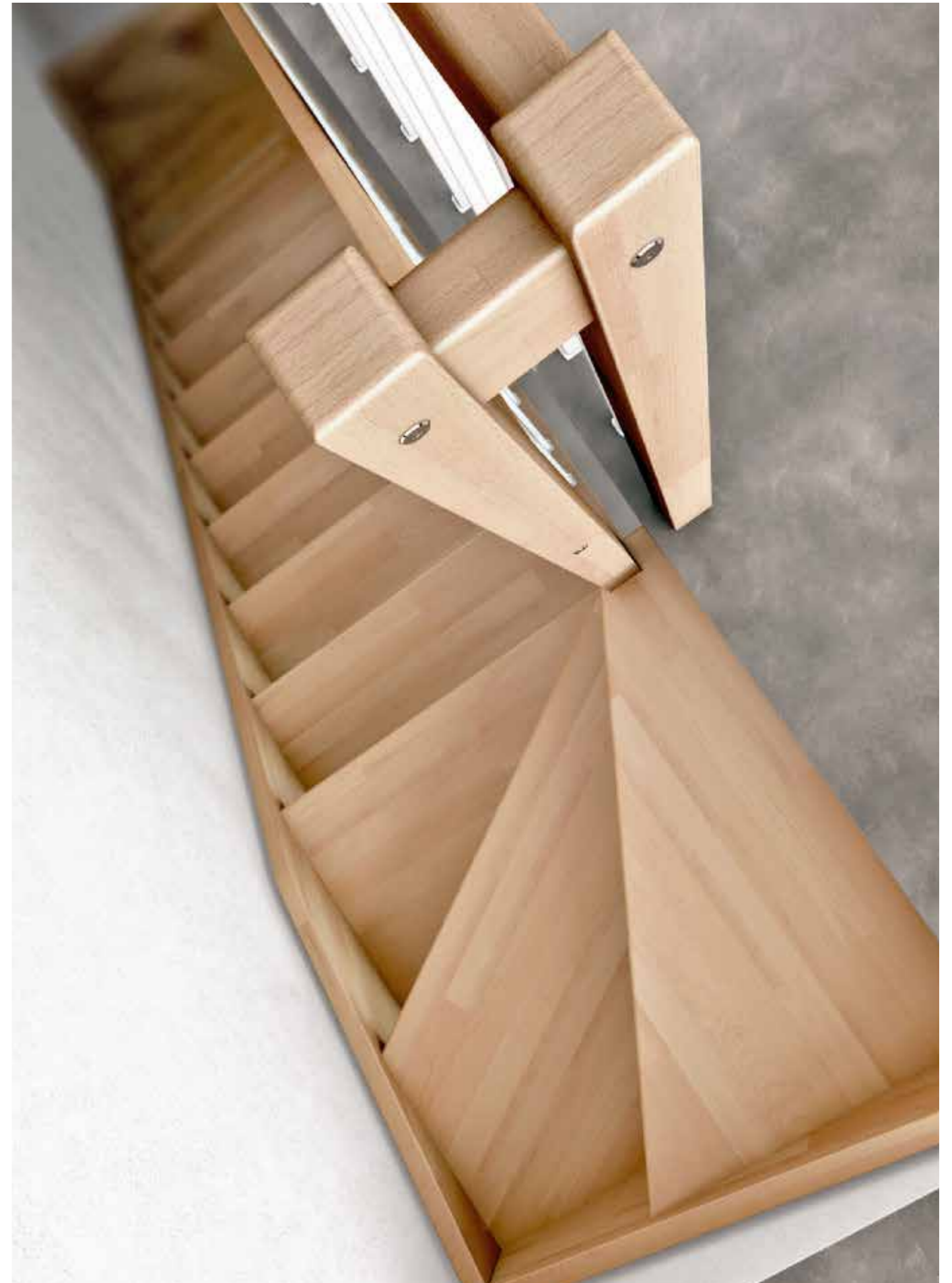
Beechwood steps th. 40 mm

R3 railing system with oakwood handrail and metal squared columns



**W20-1R-GLE**

Gradini in faggio sp. 40 mm  
Ringhiera R3 con colonne quadre  
in metallo  
Beechwood steps th. 40 mm  
R3 railing system with oakwood  
handrail and metal squared  
columns





**T20**

Gradini a pedata alternata  
in faggio sp. 40 mm  
Ringhiera R2  
Corrimano in legno ø 50 mm  
e colonne ø 20 mm in metallo  
verniciato  
Beechwood steps th. 40 mm  
R2 railing system  
Oakwood handrail ø 50 mm  
and varnished metal rounded  
columns ø 20 mm



**T20**





C20

Scale a chiocciola con gradini  
in legno, metallo e vetro  
Spiral staircases with wood,  
metal and glass steps

**C20-T-GLE**

Gradini in faggio tinto tortora sp. 40 mm  
Struttura centrale portante bianco  
goffrata

Ringhiera R4 verniciata con corrimano  
in faggio tinto tortora ø 50 mm

Dove-gray stained beechwood  
steps th. 40 mm

Central structure made of embossed  
white metal spacers

R4 railing system with varnished newels  
and ø 50 mm beechwood handrail



**C20-T-GLE**

Gradini in faggio sbiancato  
sp. 40 mm  
Struttura centrale bianco gofrato  
Ringhiera R2 verniciata  
Corrimano in faggio ø 50 mm  
Bleached-stained beechwood  
steps th. 40 mm  
Central structure made of  
embossed white metal spacers  
R2 railing system with varnished  
columns and bleached-stained  
beechwood handrail





#### **C20-Q-GLE**

Gradini in faggio tinto wenghè sp. 40 mm  
Struttura centrale portante inox lucido  
Ringhiera R5V1 con montanti e corrimano inox lucido  
Cristallo 5+5 mm temprato extrachiario  
Wenghè-stained obeechedwood steps th. 40 mm  
Central structure made of polished stainless steel spacers  
R5V1 railing system with polished stainless steel newels and handrail tempered extraclear crystal 5+5mm

#### **C20-Q-GLE**

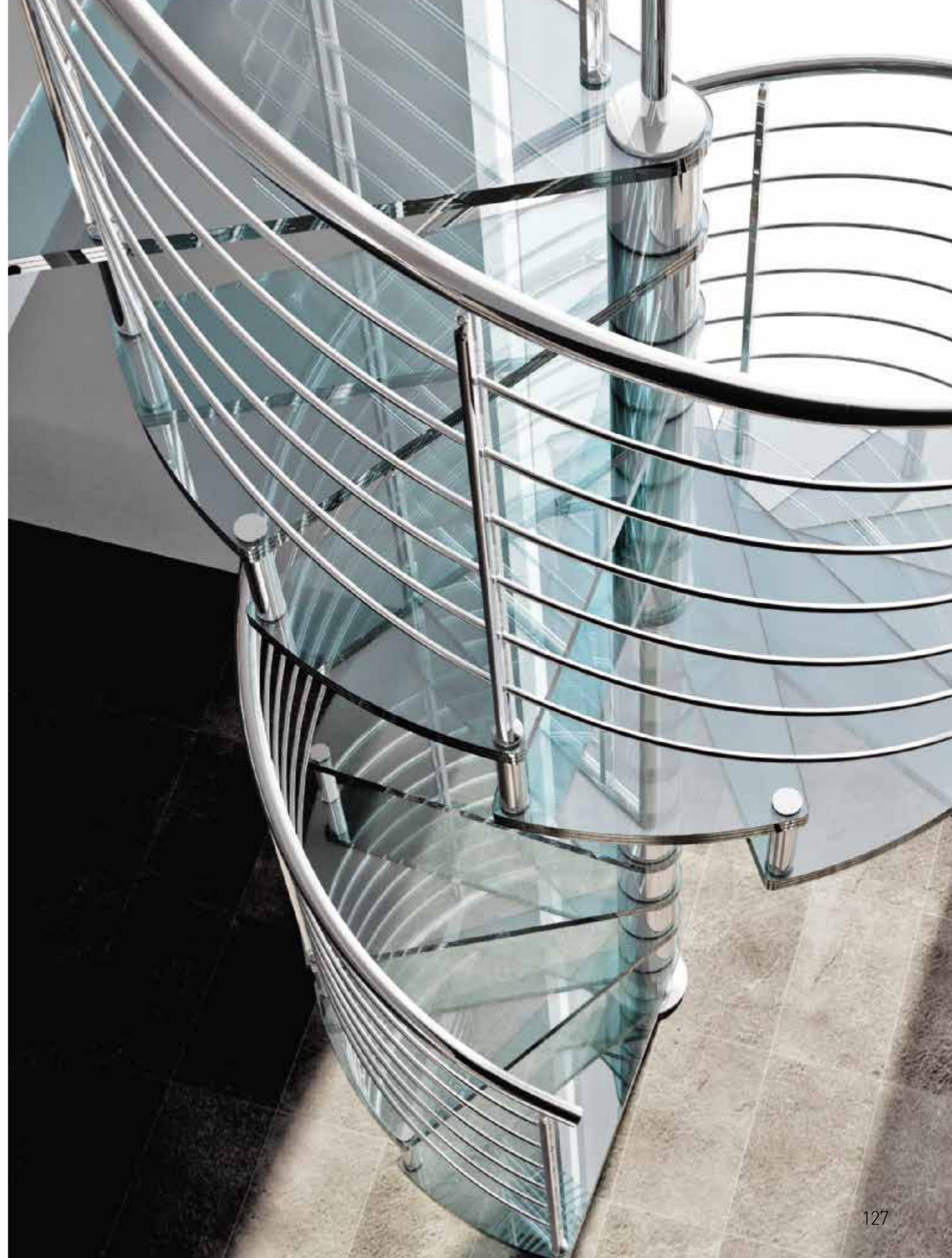
Gradini in faggio tinto mogano sp. 40 mm  
Struttura centrale portante in legno  
Ringhiera R5 con montanti inox lucido e corrimano in legno  
Mahogany-stained beechwood steps th. 40 mm  
Central structure made of beechwood spacers  
R5 railing system with polished stainless steel newels and beechwood handrail





**C20-T-GVE**

Gradini in cristallo temprato extrachiaro  
sp.10+10+10 mm  
Struttura centrale portante inox lucido  
Ringhiera R5 con montanti e corrimano inox  
Tempered extraclear crystal steps  
th.10+10+10 mm  
Central structure made of polished  
stainless steel spacers  
R5 railing system with polished  
stainless steel newels and handrail





**C20-T-GL**  
Gradini in lamiera  
ossidata ruggine  
sp.10 mm  
Struttura centrale in  
metallo  
Ringhiera R5 con  
montanti e corrimano  
inox lucido  
Oxidized metal sheet  
steps th.10 mm  
Central structure  
made of oxidized spacers  
R5 railing system with  
polished stainless steel  
newels and handrail

**C20-Q-GL**

Gradini in lamiera verniciata  
bianco gofrato sp.10 mm  
Struttura centrale in metallo  
Ringhiera R5 con montanti e  
corrimano inox lucido  
Embossed white varnished  
metal steps th.10 mm  
Central structure made  
varnished spacers  
R5 railing system with  
polished stainless steel  
newels and handrail

**C20-T-GL**

Gradini in lamiera verniciata  
nero antracite sp.10 mm  
Struttura centrale portante  
in metallo  
Ringhiera R5 con montanti  
verniciati e corrimano inox lucido  
Black varnished metal steps  
th.10 mm and central metal  
spacers  
R5 railing system with black  
varnished newels and polished  
stainless steel handrail









F20

Scale a chiocciola  
in metallo  
Spiral staircases with  
metal steps



**F20-T**

Gradini e struttura in metallo  
colore nero antracite  
Ringhiera R2t con corrimano  
plastico nero  
Varnished metal press-folded  
steps and central spacers  
R2 railing system with varnished  
columns and plastic handrail





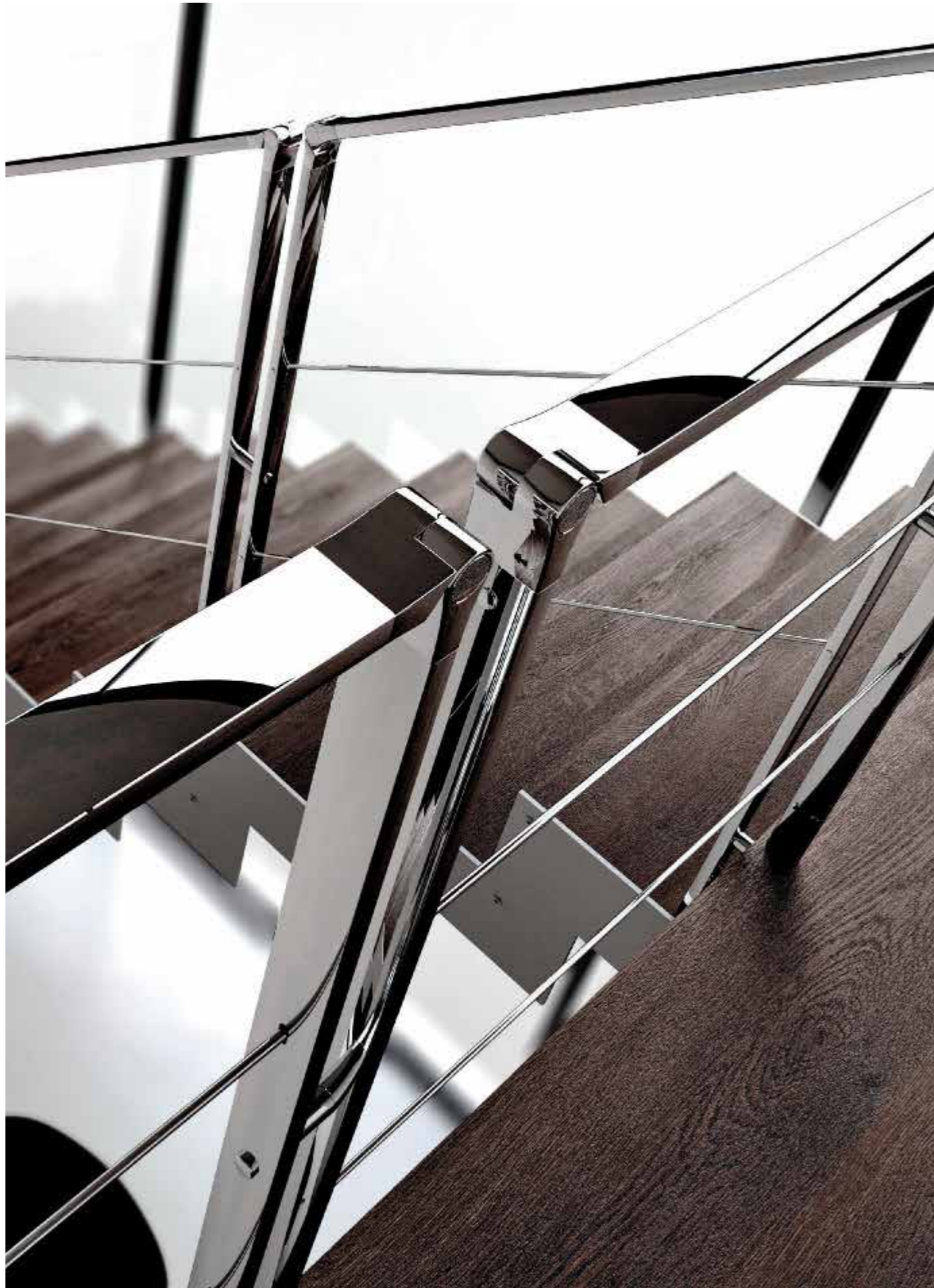
**F20-Z-T**

Gradini struttura e ringhiera  
in lamiera zincata a caldo

Ringhiera R2t con corrimano  
plastico grigio

Steps, structure and railing made  
of hot-dip galvanised metal

R2t railing system with grey  
plastic handrail



R

PATENTED

Collezione ringhiere  
Railings collection

# R1

R1

interna / esterna  
on step fix / on side fix

**Corrimano**

Inox satinato / lucido ø 42,4  
Legno ø 50  
Plastico ø 40

**Montante**

Inox satinato / lucido  
metallo verniciato

**Handrail**

Brushed/polished  
stainless steel ø 42,4  
Wood ø 50  
Plastic ø 40

**Newel**

Brushed/polished stainless steel  
varnished metal



# R2

R2 Tonda  
R2 Rounded columns

interna/esterna  
on step fix / on side fix

**Corrimano**

Inox satinato / lucido ø 42,4  
Legno ø 50  
Plastico ø 40

**Colonna**

Verniciata

**Handrail**

Brushed/polished  
stainless steel ø 42,4  
Wood ø 50  
Plastic ø 40

**Columns**

Varnished



R2 Quadra  
R2 Squared columns

interna  
on step fix

**Corrimano**

Inox satinato / lucido ø 42,4  
Legno ø 50  
Plastico ø 40

**Colonna**

Verniciata

**Handrail**

Brushed/polished  
stainless steel ø 42,4  
Wood ø 50  
Plastic ø 40

**Columns**

Varnished



# R3

R3 Tonda  
R3 Rounded post

interna  
on step fix

**Corrimano**

Legno 100x40

**Colonne**

Verniciate

**Caposcala**

Legno sezione 60x60

**Handrail**

Wood section 100x40

**Columns**

Varnished

**Post**

Wood section 60x60



R3 Quadra  
R3 Squared post

interna  
on step fix

**Corrimano**

Legno 100x40

**Colonne**

Verniciate

**Caposcala**

Legno sezione 60x60

**Handrail**

Wood section 100x40

**Columns**

Varnished

**Post**

Wood section 60x60



# R4

R4

interna/esterna  
on step fix / on side fix

**Corrimano**

Inox satinato / lucido ø 42,4  
Legno ø 50  
Plastico ø 40

**Montante**

Inox satinato / lucido  
metallo verniciato

**Handrail**

Brushed/polished stainless  
steel ø 42,4  
Wood ø 50  
Plastic ø 40

**Newel**

Brushed/polished stainless  
steel / varnished metal



# R5

## R5

### interna/esterna on step fix / on side fix

#### Corrimano

Inox satinato o lucido ø 42,4  
Legno ø 50  
Inox satinato o lucido 40x15  
Plastico ø 40

#### Montante

Inox satinato / lucido  
metallo verniciato

#### Handrail

Brushed/polished stainless  
steel ø 42,4  
Wood ø 50  
Brushed/polished  
stainless steel 40x15

#### Newel

Brushed/polished stainless steel  
Varnished metal

## R5 V1

### interna/esterna on step fix / on side fix

#### Corrimano

Inox satinato o lucido ø 42,4  
Legno ø 50  
Inox satinato / lucido 40x15

#### Montante

Inox satinato / lucido /  
Metallo verniciato

#### Cristallo

Stratificato extra chiaro  
temprato 5+5mm

#### Handrail

Brushed/polished  
stainless steel ø 42,4  
Wood ø 50

Brushed/polished  
stainless steel 40x15

#### Newel

Brushed/polished stainless steel  
Varnished metal

#### Crystal

Laminated, tempered  
extraclear 5+5mm

## R5 V2

### interna/esterna on step fix / on side fix

#### Corrimano

Inox satinato o lucido ø 42,4  
Legno ø 50  
Inox satinato o lucido 40x15

#### Montante

Inox satinato / lucido  
Metallo erniciato

#### Cristallo

Stratificato extra chiaro  
temprato 5+5mm

#### Handrail

Brushed/polished  
stainless steel ø 42,4  
Wood ø 50

Brushed/polished  
stainless steel 40x15

#### Newel

Brushed/polished stainless steel  
Varnished metal

#### Crystal

Laminated, tempered  
extraclear 5+5mm



# R6

## R6

### interna/esterna on step fix / on side fix

#### Corrimano

Inox satinato / lucido ø 42,4  
Legno ø 50  
Plastico ø 40

#### Montante

Inox satinato / lucido

#### Handrail

Brushed/polished stainless  
steel ø 42,4 Wood ø 50

#### Newel

Brushed/polished stainless steel

## R6 V2

### interna/esterna on step fix / on side fix

#### Corrimano

Inox satinato / lucido ø 42,4  
Legno ø 50

#### Montante

Inox satinato / lucido

#### Cristallo

Stratificato extra chiaro  
temprato 5+5mm

#### Handrail

Brushed/polished  
stainless steel ø 42,4  
Wood ø 50

#### Newel

Brushed/polished stainless steel

#### Crystal

Laminated, tempered  
extraclear 5+5mm

## R6 V3

### interna/esterna on step fix / on side fix

#### Corrimano

Inox satinato / lucido ø 42,4  
Legno ø 50

#### Montante

Inox satinato / lucido

#### Cristallo

Stratificato extra chiaro  
temprato 5+5mm

#### Handrail

Brushed/polished  
stainless steel ø 42,4  
Wood ø 50

#### Newel

Brushed/polished stainless steel

#### Crystal

Laminated, tempered  
extraclear 5+5mm

## R6 V4

### interna/esterna on step fix / on side fix

#### Corrimano

Inox satinato / lucido ø 42,4  
Legno ø 50

#### Montante

Inox satinato / lucido

#### Cristallo

Stratificato extra chiaro  
temprato 5+5mm

#### Handrail

Brushed/polished  
stainless steel ø 42,4  
Wood ø 50

#### Newel

Brushed/polished stainless steel

#### Crystal

Laminated, tempered  
extraclear 5+5mm





# R7

R7 2 cavetti  
R7 2 rods

interna/esterna  
on step fix / on side fix

**Corrimano**

Inox satinato / lucido

**Montante**

Inox satinato / lucido

**Handrail**

Brushed/polished stainless steel

**Newel**

Brushed/polished stainless steel



R7 5 cavetti  
R7 5 rods

interna/esterna  
on step fix / on side fix

**Corrimano**

Inox satinato / lucido

**Montante**

Inox satinato / lucido

**Handrail**

Brushed/polished stainless steel

**Newel**

Brushed/polished stainless steel



# R8

R8

interna  
on step fix

**Corrimano**

Legno sez 60x40

**Colonne**

Verniciate

**Handrail**

Wood section 60x40

**Columns**

Varnished



R8 con caposcala  
R8 with starting post

interna  
on step fix

**Corrimano**

Legno sez 60x40

**Colonne**

Verniciate

**Handrail**

Wood section 60x40

**Columns**

Varnished



# R9

R9

interna  
on step fix

**Corrimano**

Legno ø 50

**Colonne**

Legno ø 40

**Handrail**

Wood ø 50

**Columns**

Wood ø 40



R9 con caposcala  
R9 with starting post

interna  
on step fix

**Corrimano**

Legno ø 50

**Colonne**

Legno ø 40

**Handrail**

Wood ø 50

**Columns**

Wood ø 40



# RV1

RV1

esterna  
on side fix

**Cristallo**

stratificato 10+10 mm  
extrachiaro temprato

**Crystal**

Laminated 10+10 mm  
extraclear tempered



# Finiture

Collezione finiture  
e trattamenti  
Wood and metal finishes  
and treatments

# COLORI E FINITURE

# FAGGIO BRUSH

Faggio lamellare spazzolato con finitura ad olii e cere dure naturali nelle tinte traslucide e con vernici sintetiche nei colori coprenti.



01 - **Sbiancato** natural OIL  
cod. FF-BR-SB-NO

02 - **Milk** natural OIL  
cod. FF-BR-MK-NO

03 - **Naturale** natural OIL  
cod. FF-BR-NT-NO

04 - **Grigio** natural OIL  
cod. FF-BR-GI-NO



05 - **Tabacco** natural OIL  
cod. FF-BR-TA-NO

06 - **Stone** natural OIL  
cod. FF-BR-ST-NO

07 - **Smoke** natural OIL  
cod. FF-BR-SM-NO

08 - **Fumo** natural OIL  
cod. FF-BR-FU-NO

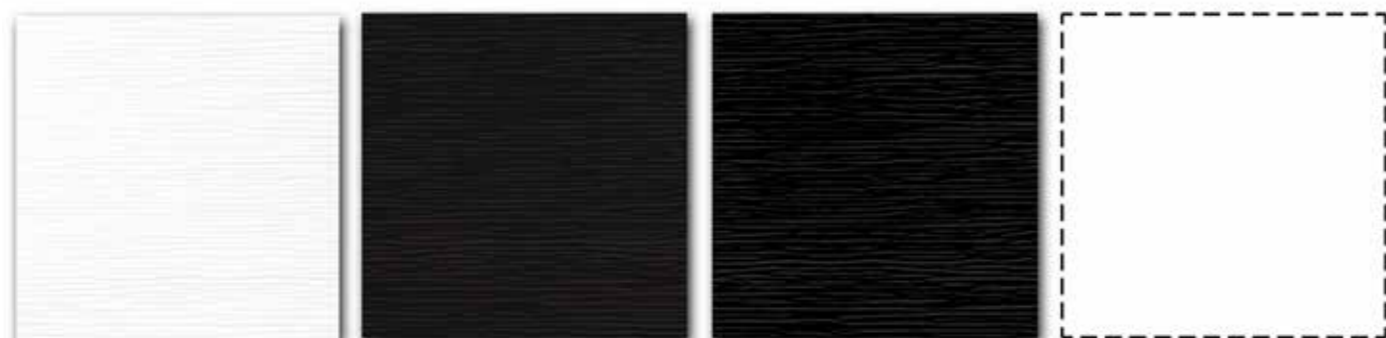


09 - **Nero Ebano** natural OIL  
cod. FF-BR-NB-NO

10 - **Rovere** natural OIL  
cod. FF-BR-RO-NO

11 - **Noce** natural OIL  
cod. FF-BR-NC-NO

12 - **Wengè** natural OIL  
cod. FF-BR-WE-NO



13 - **Bianco** synthetic  
cod. FF-BR-BI-SY

14 - **Carruba** synthetic  
cod. FF-BR-CA-SY

15 - **Nero** synthetic  
cod. FF-BR-NE-SY

Colore a campione synthetic  
cod. FF-BR-XX-SY

Le tonalità cromatiche sono soggette a variabilità dovute al supporto naturale che può variare di colore e intensità, inoltre la stampa tipografica non permette una fedele riproduzione dei colori.

# COLORI E FINITURE

# FAGGIO REFIL

Faggio lamellare segato con finitura ad olii e cere dure naturali nelle tinte traslucide e con vernici sintetiche nei colori coprenti.



01 - **Sbiancato** natural OIL  
cod. FF-RE-SB-NO

02 - **Milk** natural OIL  
cod. FF-RE-MK-NO

03 - **Naturale** natural OIL  
cod. FF-RE-NT-NO

04 - **Grigio** natural OIL  
cod. FF-RE-GI-NO



05 - **Tabacco** natural OIL  
cod. FF-RE-TA-NO

06 - **Stone** natural OIL  
cod. FF-RE-ST-NO

07 - **Smoke** natural OIL  
cod. FF-RE-SM-NO

08 - **Fumo** natural OIL  
cod. FF-RE-FU-NO

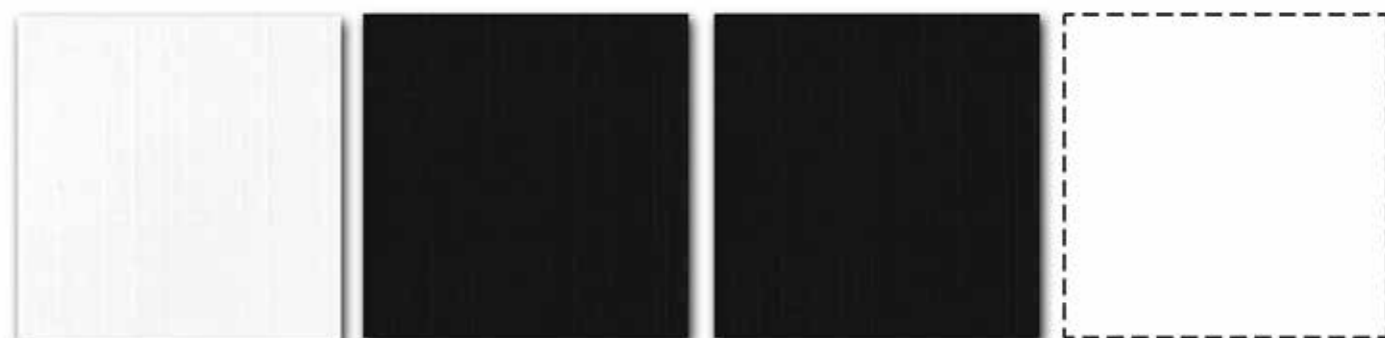


09 - **Nero Ebano** natural OIL  
cod. FF-RE-NB-NO

10 - **Rovere** natural OIL  
cod. FF-RE-RO-NO

11 - **Noce** natural OIL  
cod. FF-RE-NC-NO

12 - **Wengè** natural OIL  
cod. FF-RE-WE-NO



13 - **Bianco** synthetic  
cod. FF-RE-BI-SY

14 - **Carruba** synthetic  
cod. FF-RE-CA-SY

15 - **Nero** synthetic  
cod. FF-RE-NE-SY

Colore a campione synthetic  
cod. FF-RE-XX-SY

Le tonalità cromatiche sono soggette a variabilità dovute al supporto naturale che può variare di colore e intensità, inoltre la stampa tipografica non permette una fedele riproduzione dei colori.

# COLORI E FINITURE

# FAGGIO POLISH

Faggio lamellare levigato con finitura a tre mani di vernice sintetica nelle tonalità traslucide e coprenti.



01 - **Sbiancato** synthetic  
cod. FF-PO-SB-SY

02 - **Milk** synthetic  
cod. FF-PO-MK-SY

03 - **Naturale** synthetic  
cod. FF-PO-NT-SY

04 - **Grigio** synthetic  
cod. FF-PO-GI-SY



05 - **Tabacco** synthetic  
cod. FF-PO-TA-SY

06 - **Stone** synthetic  
cod. FF-PO-ST-SY

07 - **Smoke** synthetic  
cod. FF-PO-SM-SY

08 - **Fumo** synthetic  
cod. FF-PO-FU-SY



09 - **Nero Ebano** synthetic  
cod. FF-PO-NB-SY

10 - **Rovere** synthetic  
cod. FF-PO-RO-SY

11 - **Noce** synthetic  
cod. FF-PO-NC-SY

12 - **Wengè** synthetic  
cod. FF-PO-WE-SY



13 - **Bianco** synthetic  
cod. FF-PO-BI-SY

14 - **Carruba** synthetic  
cod. FF-PO-CA-SY

15 - **Nero** synthetic  
cod. FF-PO-NE-SY

Colore a campione synthetic  
cod. FF-PO-XX-SY

Le tonalità cromatiche sono soggette a variabilità dovute al supporto naturale che può variare di colore e intensità, inoltre la stampa tipografica non permette una fedele riproduzione dei colori.

# COLORI E FINITURE

# METALLO

Acciaio al carbonio verniciato con polveri poliesteri e acciaio inox AISI 304 con trattamento di finitura superficiale.



01 - **Bianco** synthetic  
cod. FE-BI  
Coordinato con componenti in  
materiale plastico

02 - **\* Sabbia** synthetic  
cod. FE-SA

03 - **\* Cenere** synthetic  
cod. FE-CE

04 - **Grigio** synthetic  
cod. FE-GI  
Coordinato con componenti  
in materiale plastico



05 - **\* Micaceo** synthetic  
cod. FE-MI

06 - **Bronzo** synthetic  
cod. FE-BZ

07 - **Tortora** synthetic  
cod. FE-TO  
Coordinato con componenti  
in materiale plastico

08 - **\* Antracite** synthetic  
cod. FE-AN

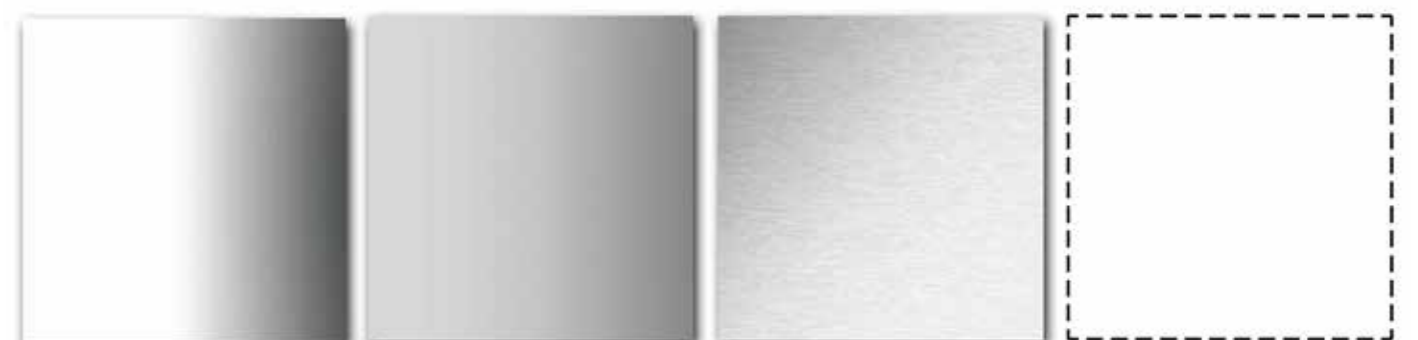


09 - **Nero** synthetic  
cod. FE-NE  
Coordinato con componenti  
in materiale plastico

10 - **\* Champagne** synthetic  
cod. FE-CH

11 - **\* Ruggine** synthetic  
cod. FE-RU

12 - **\* Brunito** synthetic  
cod. FE-BR



13 - **Lucido** polished  
cod. IN-IL

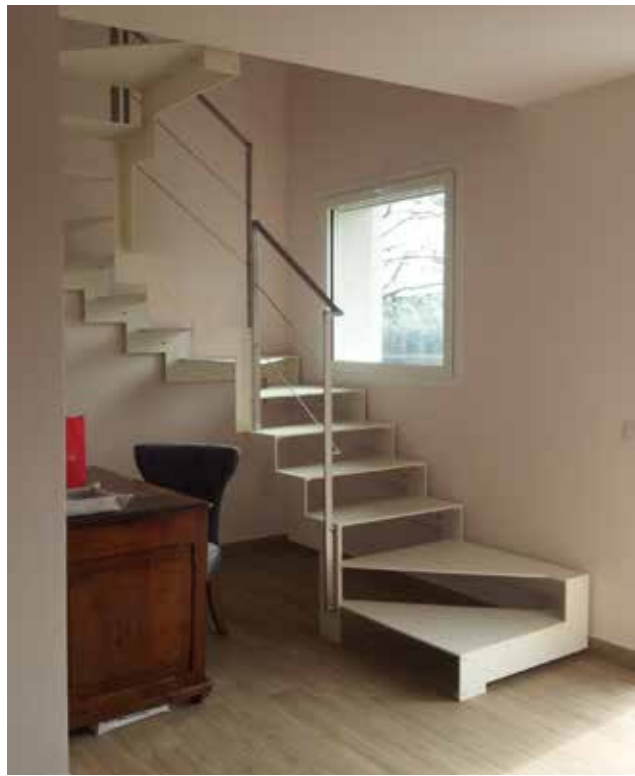
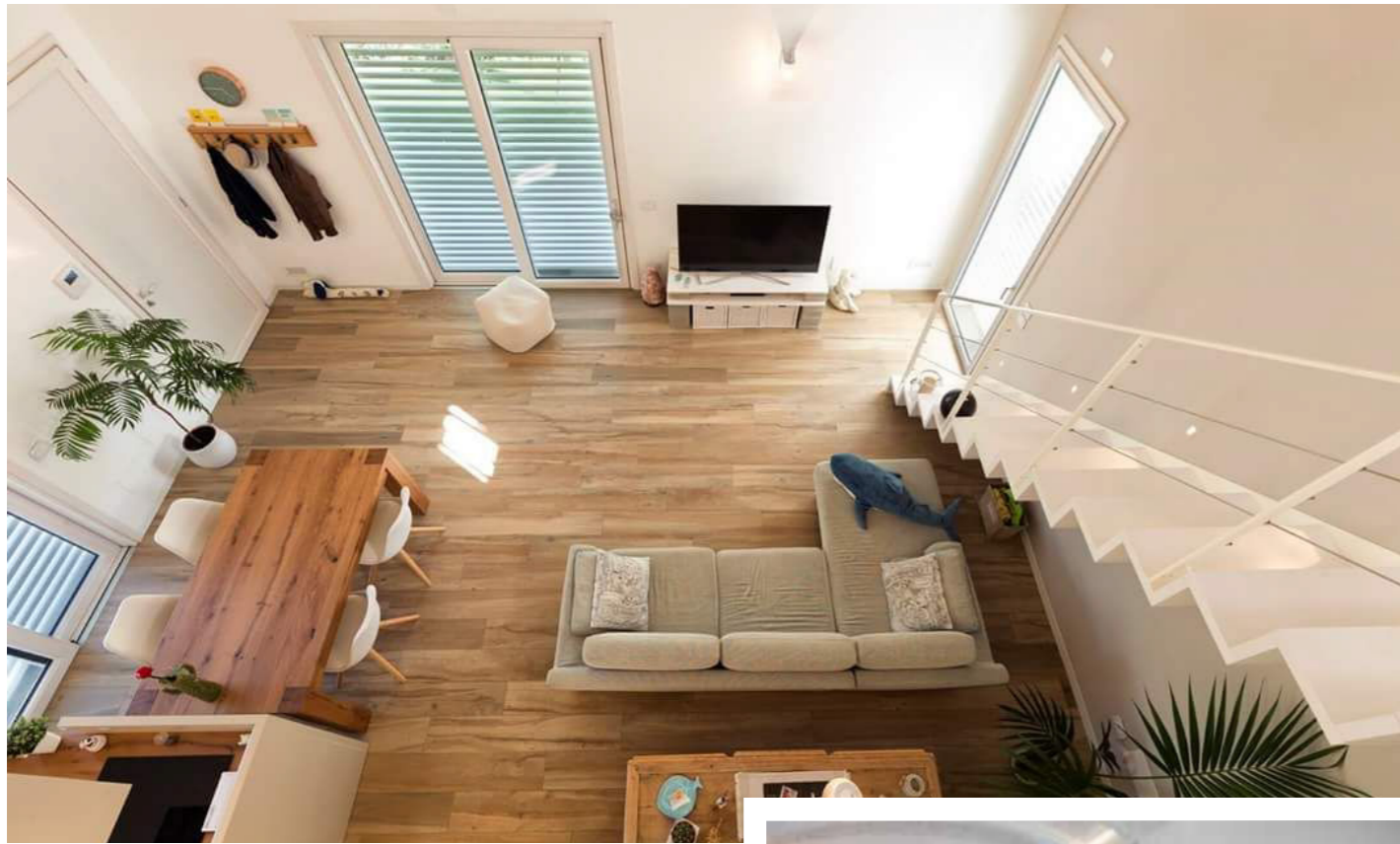
14 - **Perlato** polished  
cod. IN-IP

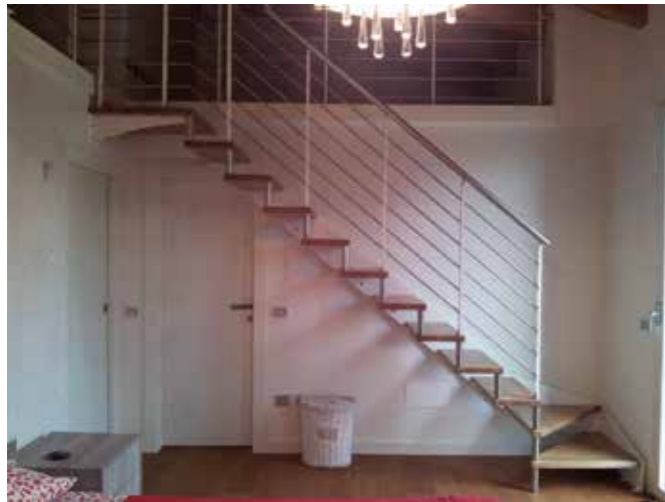
15 - **Satinato** polished  
cod. IN-IS

\*\* Colore a campione RAL synthetic  
cod. FE-XX

\* Colori extra e \*\*campione RAL, prevedere maggiorazione come indicato nelle esecuzioni speciali.

Le tonalità cromatiche sono indicative, dovute alla stampa tipografica che non permette una fedele e costante riproduzione dei colori.





I modelli, i dati e i toni dei colori contenuti in questo catalogo sono a titolo indicativo. L'azienda si riserva il diritto di apportare modifiche e migliorie tecniche in qualunque momento, senza darne preavviso.  
All models, data and colourings in this catalogue are given for guidance. The company reserves the right to make changes and improvements, as they become necessary, at any time without prior notice.



**ANM s.r.l.**

Via Vita Di Vita, 2 - 47893 Borgo Maggiore (RSM) - t. (+378) 0549 903200 - f. (+378) 0549 906660

info@anmsrl.com - [www.anmdesign.sm](http://www.anmdesign.sm)